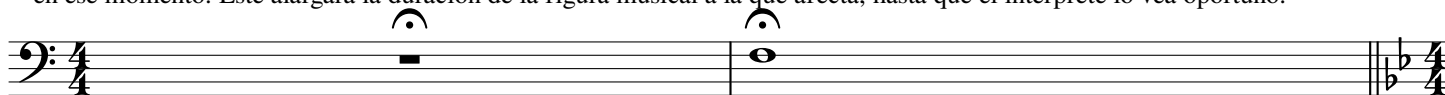


# EL CALDERÓN Y LIGADURA DE PROLONGACIÓN

David Andreu de la Torre

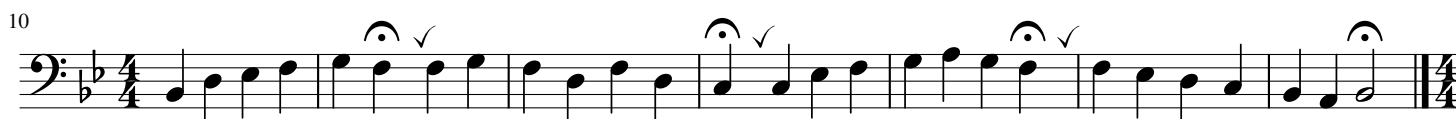
**CALDERÓN:** El Calderón es un signo que se coloca encima de la figura o silencio y nos indica la suspensión del pulso musical en ese momento. Éste alargará la duración de la figura musical a la que afecta, hasta que el interprete lo vea oportuno.



## EJERCICIO 1



## EJERCICIO 2



## LIGADURA DE PROLONGACIÓN:

Sirve para unir dos notas de la misma altura, (la misma nota) añadiendo a la primera el valor de la segunda

EJEMPLO=



## EJERCICIO 3



### EJERCICIO 4

33

Musical notation for Ejercicio 4, measures 33-40. Bass clef, 4/4 time, key signature of two flats. The exercise consists of a sequence of eighth and quarter notes with various articulations like slurs and accents.

### EJERCICIO 5

40

Musical notation for Ejercicio 5, measures 40-46. Bass clef, 4/4 time, key signature of two flats. The exercise consists of a sequence of quarter and eighth notes with slurs.

### EJERCICIO 6

47

Musical notation for Ejercicio 6, measures 47-53. Bass clef, 4/4 time, key signature of two flats. The exercise consists of a sequence of quarter and eighth notes with slurs.

### EJERCICIO 7 (TITANIC PARTE 1)

54

Musical notation for Ejercicio 7 (Titanic Parte 1), measures 54-61. Bass clef, 4/4 time, key signature of two flats. The exercise includes triplets and various articulations.

62

Musical notation for Ejercicio 7 (Titanic Parte 1), measures 62-63. Bass clef, 4/4 time, key signature of two flats. The exercise consists of a few final notes.